



**REGIONAL SPECIALISED METEOROLOGICAL CENTRE-TROPICAL CYCLONES, NEW DELHI
TROPICAL WEATHER OUTLOOK**

DEMS-RSMC TROPICAL CYCLONES NEW DELHI DATED 04.11.2023

TROPICAL WEATHER OUTLOOK FOR NORTH INDIAN OCEAN (THE BAY OF BENGAL OF BENGAL AND THE ARABIAN SEA) VALID FOR NEXT 168 HOURS ISSUED AT 0600 UTC OF 04.11.2023 BASED ON 0300 UTC OF 04.11.2023.

BAY OF BENGAL:

A CYCLONIC CIRCULATION LIES OVER SOUTH TAMIL NADU & NEIGHBOURHOOD AND EXTENDS UPTO 5.8 KM ABOVE MEAN SEA LEVEL. IT IS LIKELY TO MOVE WESTNORTHWESTWARDS TOWARDS SOUTHEAST AND ADJOINING EASTCENTRAL ARABIAN SEA DURING NEXT 3 DAYS. UNDER ITS INFLUENCE, A LOW PRESSURE AREA IS LIKELY TO FORM OVER EASTCENTRAL ARABIAN SEA AROUND 08TH NOVEMBER, 2023.

SCATTERED LOW AND MEDIUM CLOUDS WITH EMBEDDED INTENSE TO VERY INTENSE CONVECTION LAY OVER WESTCENTRAL & SOUTHWEST BAY OF BENGAL. SCATTERED LOW AND MEDIUM CLOUDS WITH EMBEDDED MODERATE TO INTENSE CONVECTION LAY OVER EASTCENTRAL & SOUTHEAST BAY OF BENGAL, SOUTH ANDAMAN SEA AND ISOLATED WEAK TO MODERATE CONVECTION LAY OVER NORTHWEST BAY OF BENGAL, NORTH ANDAMAN SEA.

PROBABILITY OF CYCLOGENESIS (FORMATION OF DEPRESSION) DURING NEXT 168 HRS:

24 HOURS	24-48 HOURS	48-72 HOURS	72-96 HOURS	96-120 HOURS	120-144 HOURS	144-168 HOURS
NIL	NIL	NIL	NIL	NIL	NIL	NIL

ARABIAN SEA:

YESTERDAY'S CYCLONIC CIRCULATION OVER WESTCENTRAL ARABIAN SEA HAS BECOME LESS MARKED OVER THE SAME REGION AT 0300 UTC OF TODAY, THE 4th NOVEMBER, 2023.

SCATTERED TO BROKEN LOW AND MEDIUM CLOUDS WITH EMBEDDED INTENSE TO VERY INTENSE CONVECTION LAY OVER EASTCENTRAL ARABIAN SEA, OFF KARNATAKA COAST, SOUTHEAST ARABIAN SEA, OFF KERALA COAST, LAKSHWADEEP ISLANDS AREA AND COMORIN AREA. SCATTERED LOW AND MEDIUM CLOUDS WITH EMBEDDED MODERATE TO INTENSE CONVECTION LAY OVER NORTH PARTS OF CENTRAL ARABIAN SEA, REST OF SOUTH ARABIAN SEA AND ISOLATED WEAK TO MODERATE CONVECTION LAY OVER NORTH ARABIAN SEA.

PROBABILITY OF CYCLOGENESIS (FORMATION OF DEPRESSION) DURING NEXT 168 HRS:

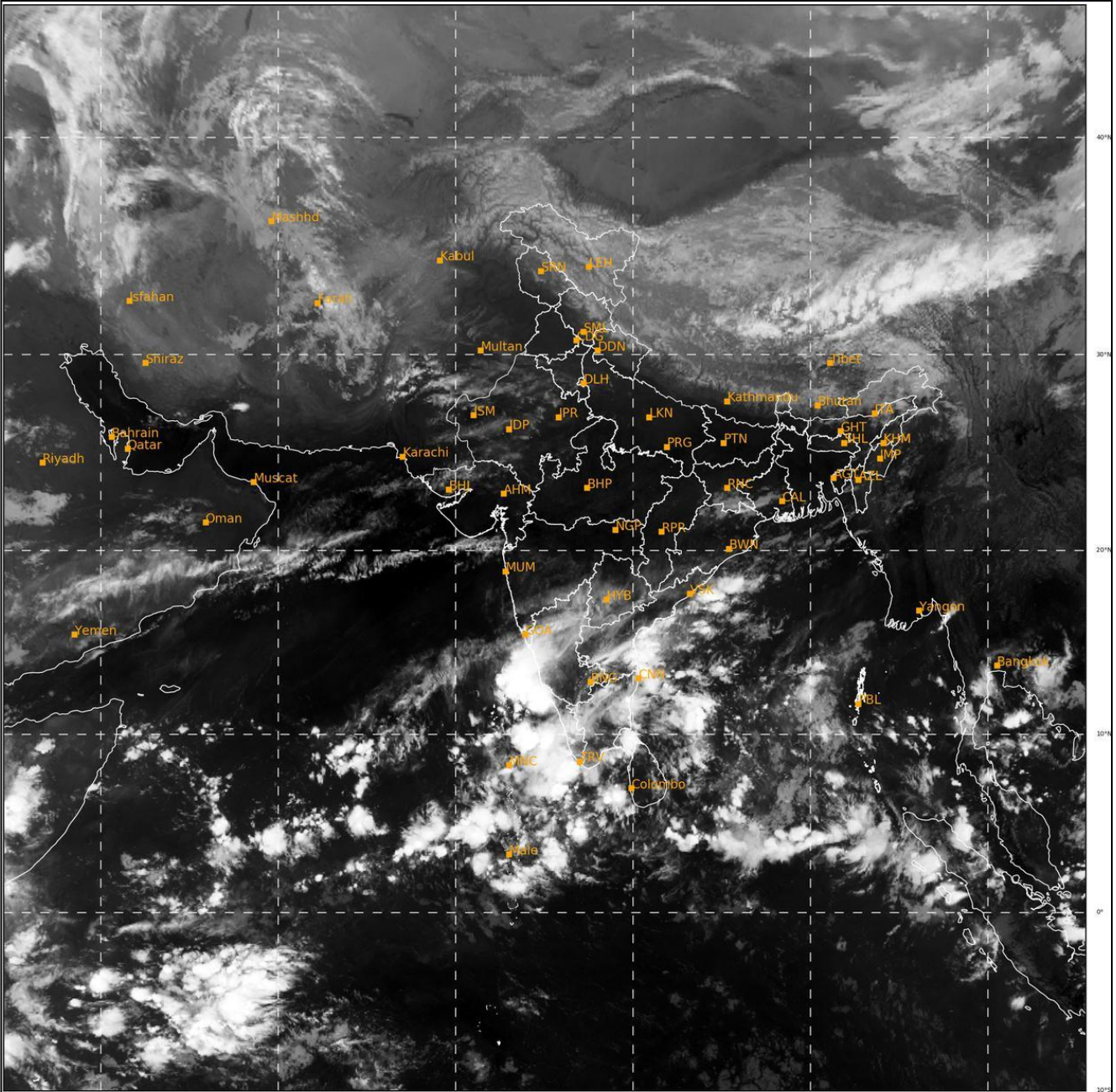
24 HOURS	24-48 HOURS	48-72 HOURS	72-96 HOURS	96-120 HOURS	120-144 HOURS	144-168 HOURS
NIL	NIL	NIL	NIL	NIL	NIL	NIL

Remarks: NIL

Cloud distribution: (a) Isolated: <25%, Scattered:25-50%, Broken: 51-75%, Solid:>75%, Convection Intensity: (a) Weak: Cloud Top Temperature (CTT) >-25°C, (b) Moderate: CTT: - 25°C to -40°C, (c) Intense: CTT: - 41°C to -70°C and (d) Very Intense: : Less than -70°C
PROBABILITY OF CYCLOGENESIS (FORMATION OF DEPRESSION):NIL: 0%, LOW: 1-33%, , MODERATE: 34-66% AND HIGH: 67-100%
This is a guidance Bulletin for WMO/ESCAP Panel Member countries. Visit respective National websites for Country specific Bulletins

SAT : INSAT-3D IMG
IMG_TIR1 10.8 um
LIC Mercator

04-11-2023/(0300 to 0326) GMT
04-11-2023/(0830 to 0856) IST



511

932

IMD,DELHI

Cloud distribution: (a) Isolated: <25%, Scattered:25-50%, Broken: 51-75%, Solid:>75%, Convection Intensity: (a) Weak: Cloud Top Temperature (CTT) >-25°C, (b) Moderate: CTT: - 25°C to -40°C, (c) Intense: CTT: - 41°C to -70°C and (d) Very Intense: : Less than -70°C
PROBABILITY OF CYCLOGENESIS (FORMATION OF DEPRESSION):NIL: 0%, LOW: 1-33%, , MODERATE: 34-66% AND HIGH: 67-100%
This is a guidance Bulletin for WMO/ESCAP Panel Member countries. Visit respective National websites for Country specific Bulletins